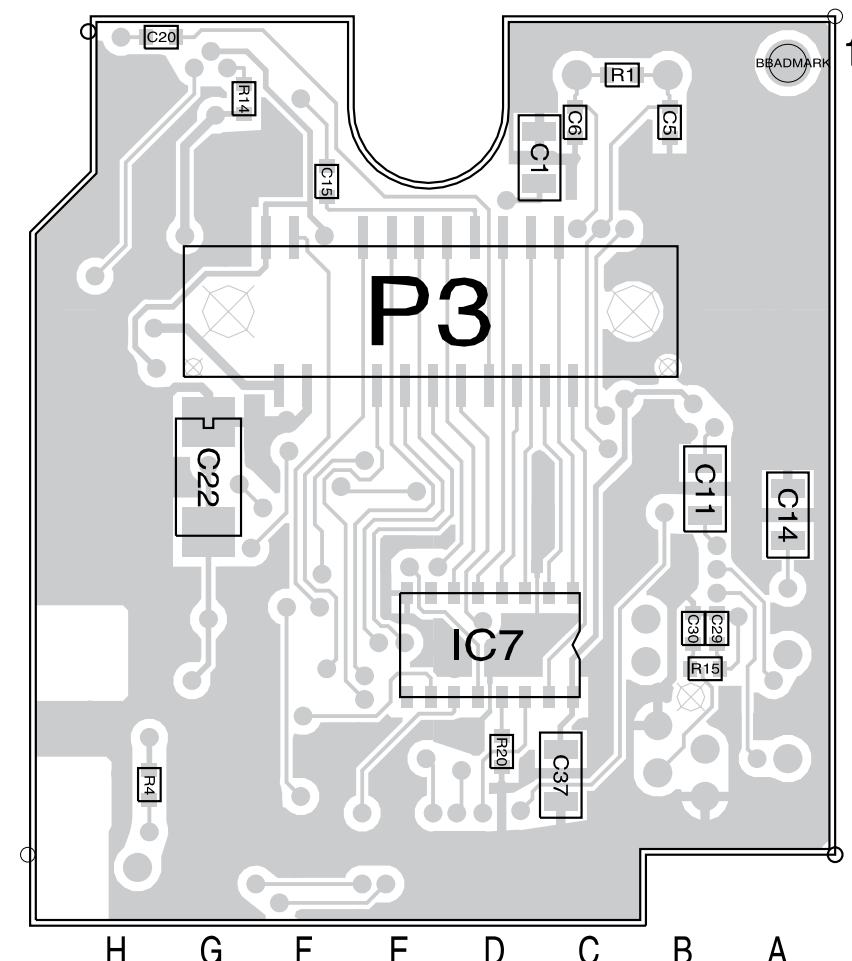
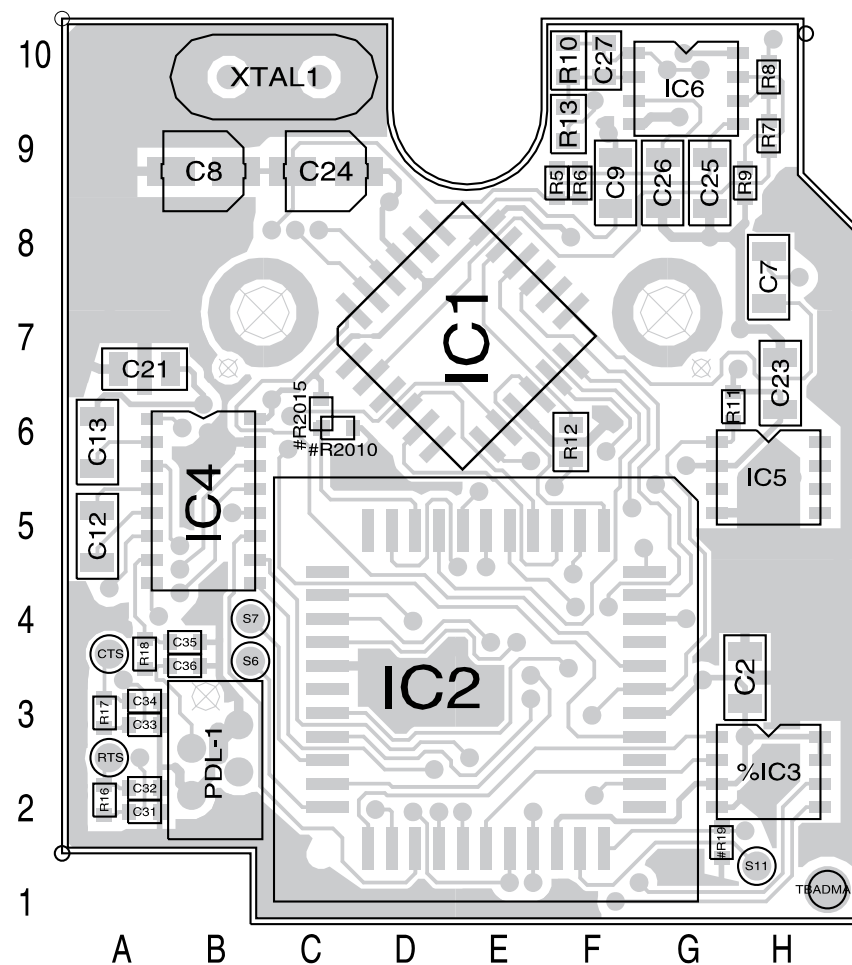


Parts List

Ref	IPN	Description
C1	015-06100-08	CAP CER 1206 100N 10% X7R 50V
C2	015-06100-08	CAP CER 1206 100N 10% X7R 50V
C5	018-12220-10	CAP 0603 CHIP 22P 50V NPO+-0.1
C6	018-12330-10	CAP 0603 CHIP 33P 50V NPO +-1%
C7	015-06100-08	CAP CER 1206 100N 10% X7R 50V
C8	016-07100-01	CAP ELECT 6X4 1M 20% 50V
C9	015-06100-08	CAP CER 1206 100N 10% X7R 50V
C11	015-06100-08	CAP CER 1206 100N 10% X7R 50V
C12	015-06100-08	CAP CER 1206 100N 10% X7R 50V
C13	015-06100-08	CAP CER 1206 100N 10% X7R 50V
C14	015-06100-08	CAP CER 1206 100N 10% X7R 50V
C15	018-15100-00	CAP 0603 10N 50V X7R +-10%
C20	018-15100-00	CAP 0603 10N 50V X7R +-10%
C21	015-06100-08	CAP CER 1206 100N 10% X7R 50V
C22	014-08100-00	CAP TANT CHIP 10U 16VW +-20%
C23	015-06100-08	CAP CER 1206 100N 10% X7R 50V
C24	016-07100-01	CAP ELECT 6X4 1M 20% 50V
C25	015-06100-08	CAP CER 1206 100N 10% X7R 50V
C26	015-06100-08	CAP CER 1206 100N 10% X7R 50V
C27	015-23470-08	CAP CER 0805 470P 10% X7R 50V
C29	018-13150-00	CAP 0603 CHIP 150P 50VNPO +-5%
C30	018-13150-00	CAP 0603 CHIP 150P 50VNPO +-5%
C31	018-13150-00	CAP 0603 CHIP 150P 50VNPO +-5%
C32	018-13150-00	CAP 0603 CHIP 150P 50VNPO +-5%
C33	018-13150-00	CAP 0603 CHIP 150P 50VNPO +-5%
C34	018-13150-00	CAP 0603 CHIP 150P 50VNPO +-5%
C35	018-13150-00	CAP 0603 CHIP 150P 50VNPO +-5%
C36	018-13150-00	CAP 0603 CHIP 150P 50VNPO +-5%
C37	015-06100-08	CAP CER 1206 100N 10% X7R 50V
IC1	002-20046-90	IC FX469LS FFSK MODEM
IC2	002-20068-07	IC MC68HC705C8AFN OTP MICRO
IC4	002-10020-20	IC SMD ADM202 RS-232 CON SO-16
IC5	002-10340-64	IC SMD MC34064 L-VOLT SENSE
IC6	002-10003-58	IC SMD LM358 DUAL O-AMP
IC7	002-74905-95	IC SMD 74HC595 SHIFT REG
P3	240-10000-10	CONN SMD 20PIN SCREW DOWN PRIC
PDL-1	240-00021-20	HEADER 4WAY PADDLE BRD STAGGER
R1	038-17100-00	RES 0603 1M 1/16W +-5%
R4	038-16100-00	RES 0603 100K 1/16W +-5%
R5	038-16100-00	RES 0603 100K 1/16W +-5%
R6	038-16100-00	RES 0603 100K 1/16W +-5%
R7	038-15100-00	RES 0603 10K 1/16W +-5%
R8	038-15100-00	RES 0603 10K 1/16W +-5%
R9	038-14470-00	RES 0603 4K7 1/16W +-5%
R10	036-15560-00	RES M/F 0805 56K 5%
R11	038-16100-00	RES 0603 100K 1/16W +-5%
R13	036-15330-00	RES M/F 0805 33K 5%
R14	038-14470-00	RES 0603 4K7 1/16W +-5%
R15	038-13100-00	RES 0603 100E 1/16W +-5%
R16	038-13100-00	RES 0603 100E 1/16W +-5%
R17	038-13100-00	RES 0603 100E 1/16W +-5%
R18	038-13100-00	RES 0603 100E 1/16W +-5%
R20	038-14100-00	RES 0603 1K0 1/16W +-5%
#R2010	038-10000-00	RES 0603 ZERO OHM 1/16W +-5%
SK2	240-04020-42	SKT 44 PIN SMD PLCC

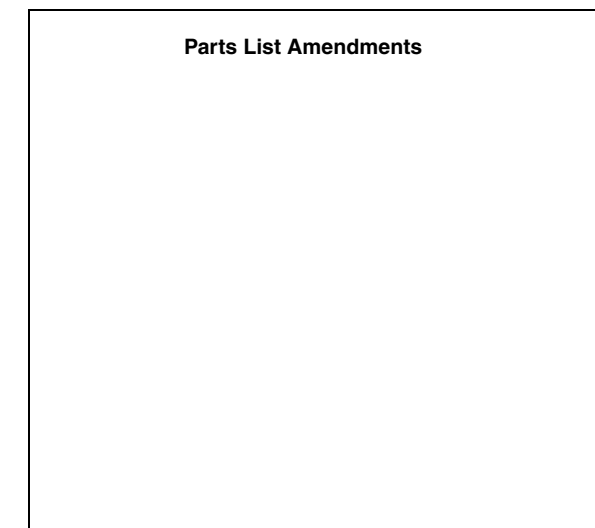
Grid Ref. Index

Device	PCB	Circuit
C1	2:D9	1-C6
C2	1:H4	1-J6
C5	2:B9	1-A5
C6	2:C9	1-A5
C7	1:H8	1-D4
C8	1:B9	1-D3
C9	1:F9	1-D3
C11	2:B6	1-L4
C12	1:A5	1-L4
C13	1:A6	1-M4
C14	2:A5	1-M4
C15	2:F9	1-F5
C20	2:H10	1-F6
C21	1:A7	1-M4
C22	2:G6	1-J6
C23	1:H7	1-F3
C24	1:C9	1-E4
C25	1:G9	1-D5
C26	1:G9	1-E3
C27	1:F10	1-E5
C29	2:B4	1-N3
C30	2:B4	1-N3
C31	1:A2	1-N3
C32	1:A2	1-P3
C33	1:A3	1-P3
C34	1:A3	1-Q3
C35	1:B4	1-Q3
C36	1:B4	1-Q3
C37	2:C2	1-L2
CTS	1:A4	1-R4
IC1	1:E7	1-B3
IC2	1:E3	1-H3
%IC3	1:H3	1-K5
IC4	1:B5	1-L3
IC5	1:H6	1-K6
IC6	1:G10	1-E6
IC6	1:G10	1-E5
IC6	1:G10	1-F3
IC7	2:D4	1-K1
P3	2:E7	1-A8
PDL-1	1:B3	1-C8
R1	2:C10	1-B5
R4	2:H2	1-K5
R5	1:F9	1-D4
R6	1:F9	1-E3
R7	1:H9	1-D6
R8	1:H10	1-E6
R9	1:H9	1-E6
R10	1:F10	1-E5
R11	1:H6	1-H7
R12	1:F6	1-B3
R13	1:F9	1-F5
R14	2:G10	1-E4
R15	2:B4	1-N3
R16	1:A2	1-P3
R17	1:A3	1-P3
R18	1:A4	1-Q4
#R19	1:G2	1-K5
R20	2:D3	1-L0
#R2010	1:C6	1-F3
#R2015	1:C6	1-F4
RTS	1:A3	1-R4
S6	1:B4	1-J3
S7	1:B4	1-J4
S11	1:H2	1-J5
XTAL1	1:C10	1-A5



PCB Information Pack  
Tait T2000

PCB Layout  
Data Modem Kit  
Parts List 220-01378-01  
IPN 403-01378-01

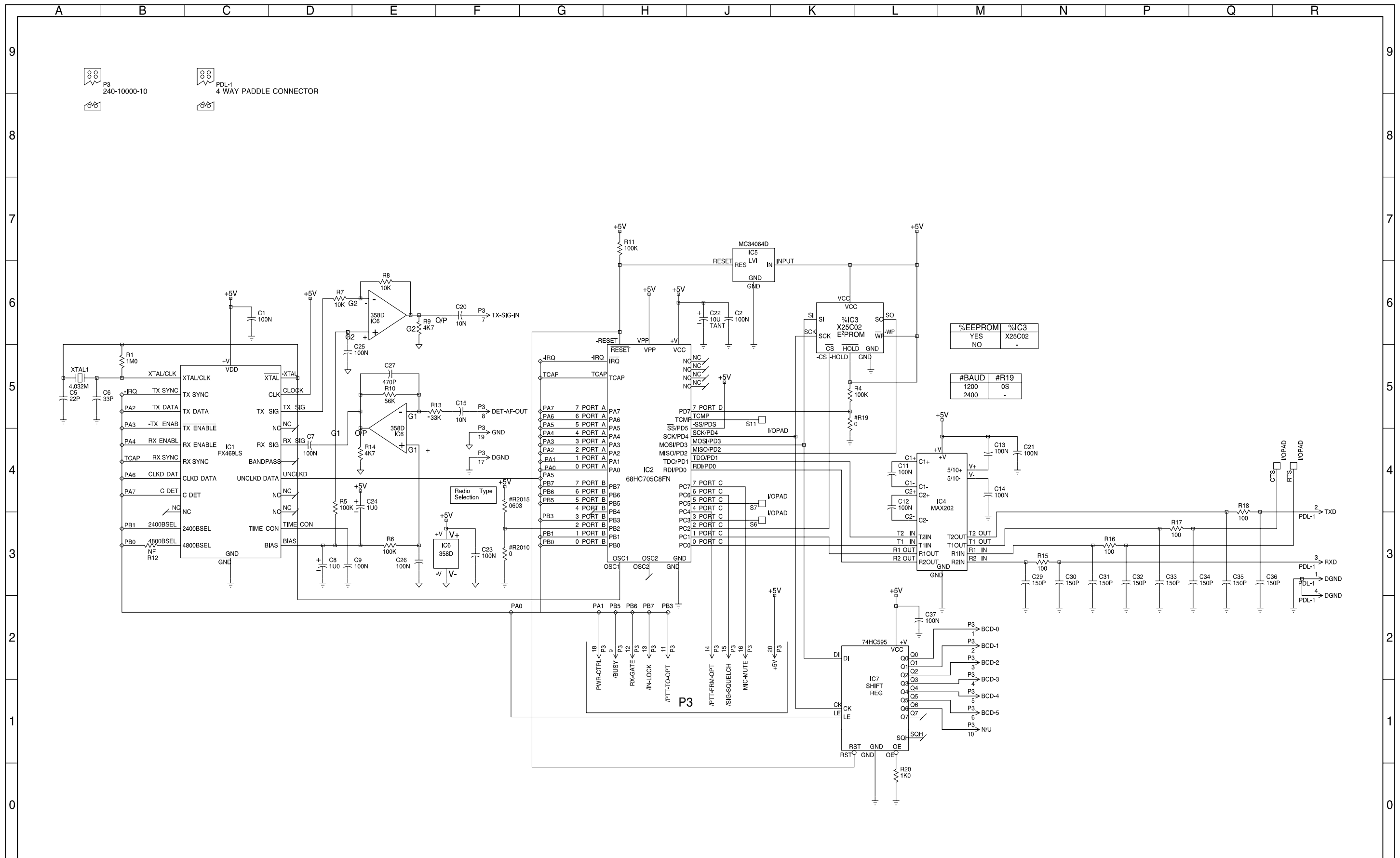


This document can be printed on A3 as single-sided, double-sided, unfolded or z-folded.



Mechanical Parts and Miscellaneous Parts

IPN	Description
205-00010-13	CBLE FLAT 10CORE 10/7/0.1 GREY
220-01378-01	PCB T201X SII 1200/2400 BAU
345-00020-02	SCRW M2.5*10 P/POZI ST BZ
352-00010-04	NUT M2.5 MACH HEX ST BZ
353-00010-04	WSHR M2.5/2.6 S/PROOF INT BZ



1A					04/03/97
P1	PROTOTYPE FOR SERIES 2 T2000	DJW	DJW	DBH	MWB
REV/ISS	AMENDMENTS	DRAWN	CHKD	D.O.	APVD
					DATE

© TAIT ELECTRONICS		
T2000 SERIES II		
1K2/2K4 BAUD DATA MODEM		
IPN:	ISSUE:	ID:
220-01378-01	A	2.S.C. 1
PROJECT:	DESIGNER:	FILE NAME:
T2000 S2	DJW	137801A
		FILE DATE:
		04/03/97
		NO. SHEETS:
		2